



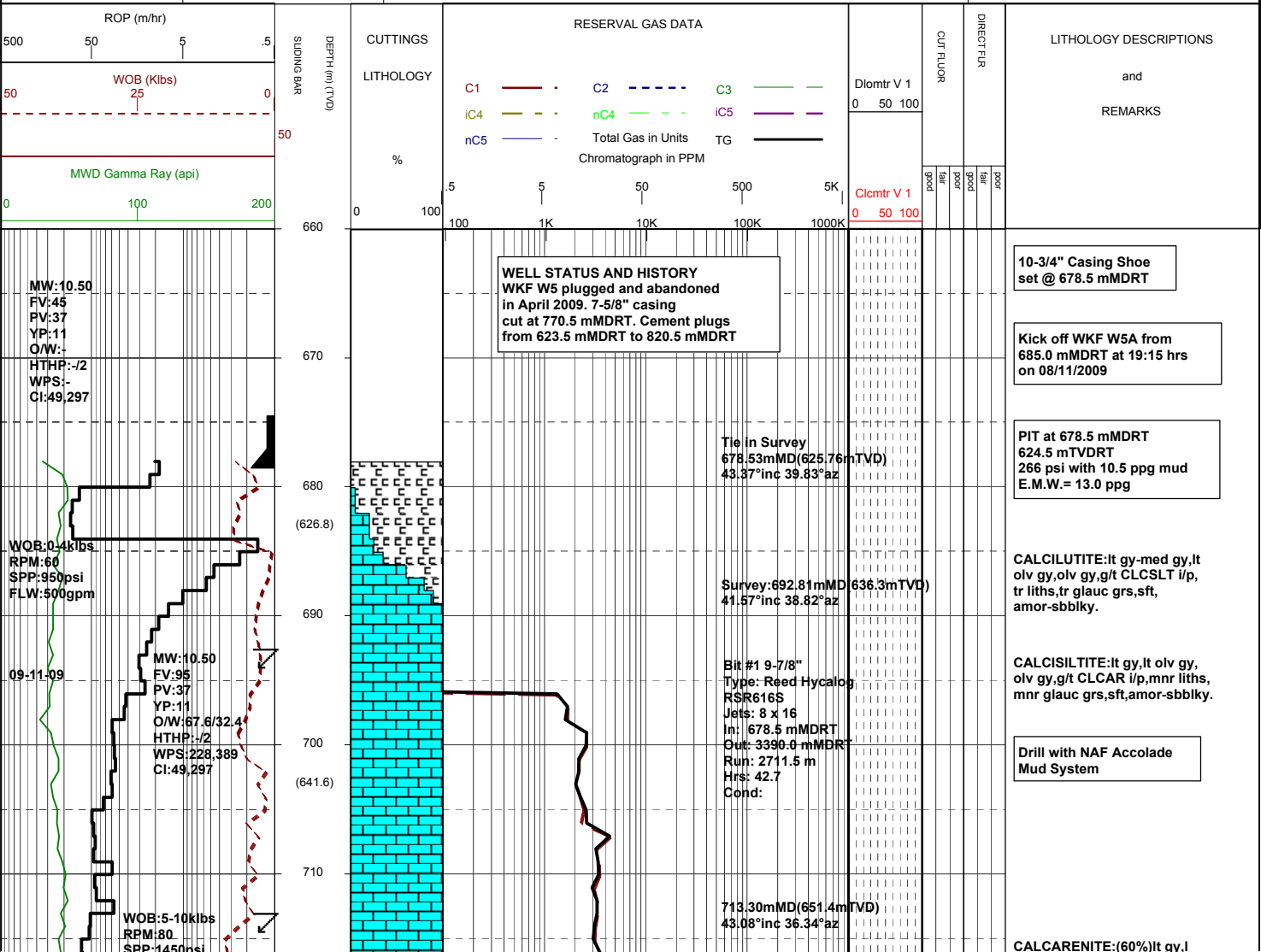
MASTERLOG

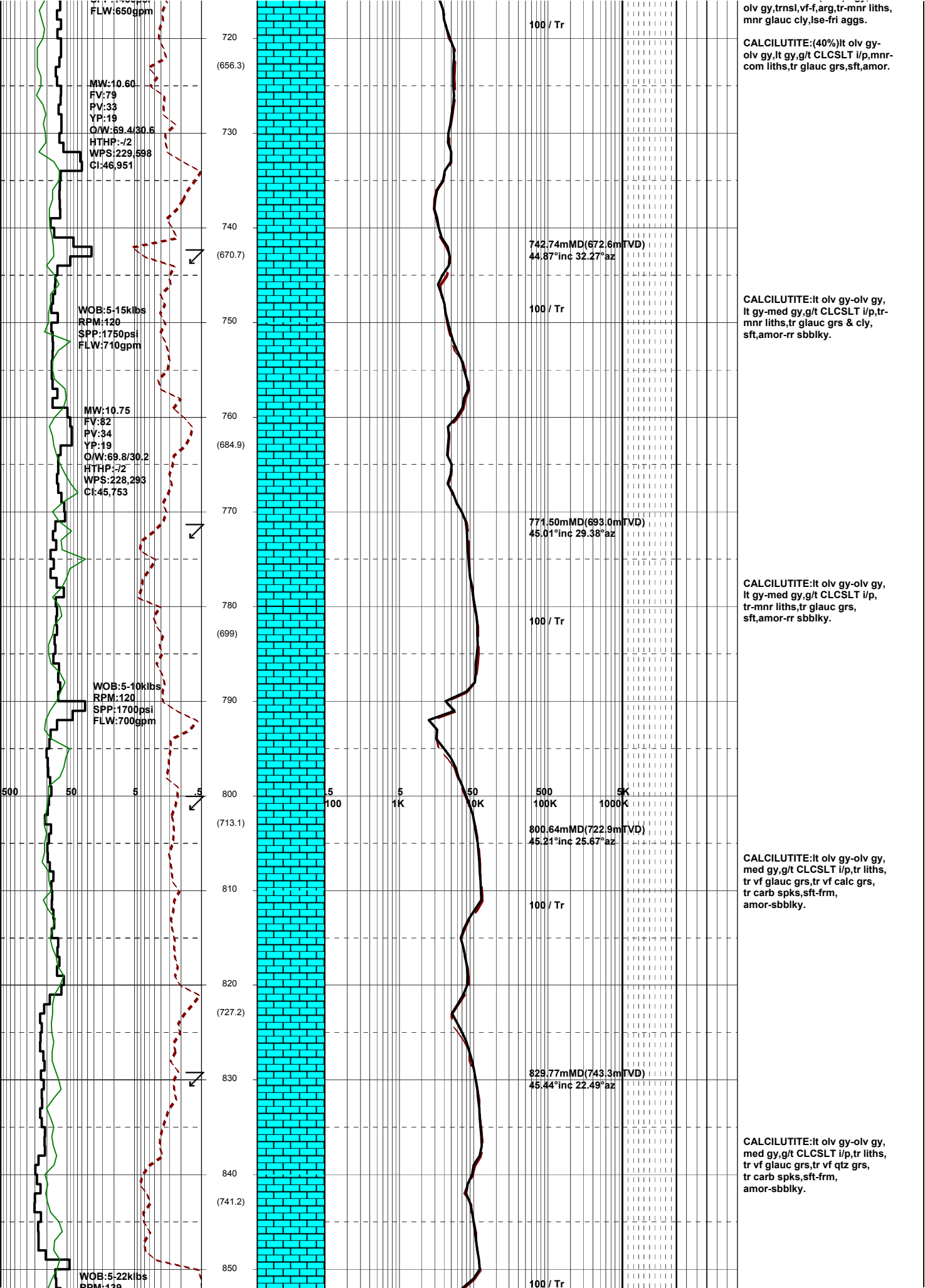
WKF W5A



GENERAL	SURFACE POSITION	HOLE / CASING INFO	DATE / DEPTH	ENGINEERS
Country : AUSTRALIA	Longitude : E 148 06 19.676		Kick off Date: 08/11/2009	Gareth Munro
Permit : VIC L7	Latitude : S 38 35 34.704	9-7/8" Hole to 3390.0 mMDRT	Total Depth Date: 12/11/2009	Dan Dennis
Field : West Kingfish	MGA Co-ord X :596271.558mE		Total Depth: 3390.00 mMDRT	Colin Chadwick
Basin : GIPPSLAND	MGA Co-ord Y : 5727810.660 mN	10-3/4" Surface Csg at 678.5 mMDRT	True Vertical Depth: 2392.50 mMDRT	Mark Smith
Well Type :DEVELOPMENT	RT to MSL : 41.73 m	7" Production Csg at	Log Scale : 1/ 500	Adam Sullivan
Rig Name : Nabors 175	RT to Sea Bed : 118.73 m			Kepa O'Reilly

ABBREVIATIONS	LITHOLOGY LEGEND	ENGINEERING LEGEND
MW Mud Weight	Claystone	Casing shoe
FV Funnel Viscosity	Siltstone	Casing top
PV Plastic Viscosity	Sandstone	Survey
YP Yield Point	Shale	MDT
O/W Oil/Water Ratio	Conglomerate	Sliding bar
WPS Aq. Phase Salinity	Marl	Sidewall core
HPHT Fluid Loss	Limestone	Core
CI Chlorides	Dolomite	Mud gain
Incl Inclination	Coal-lignite	Mud loss
Az Azimuth	Volcanics	
WOB Weight on Bit (klbs)	Bryozoa	
RPM Rotations Per Min	Radiolariae	
FLW Flow Rate (gpm)	Echinoids	
SPP Pump Pressure (psi)	Foraminiferae	
RR Re-Run Bit	Cement	
TG Trip Gas		
CG Connection Gas		
BG Background Gas		
DGP Drilled Gas Peak		
MM Mud Motor		
	Glauconite	
	Pyrite	





FLW:650gpm

MW:10.60
 FV:79
 PV:33
 YP:19
 O/W:69.4/30.6
 HTHP:-/2
 WPS:229,598
 CI:46,951

WOB:5-15kibs
 RPM:120
 SPP:1750psi
 FLW:710gpm

MW:10.75
 FV:82
 PV:34
 YP:19
 O/W:69.8/30.2
 HTHP:-/2
 WPS:228,293
 CI:45,753

WOB:5-10kibs
 RPM:120
 SPP:1700psi
 FLW:700gpm

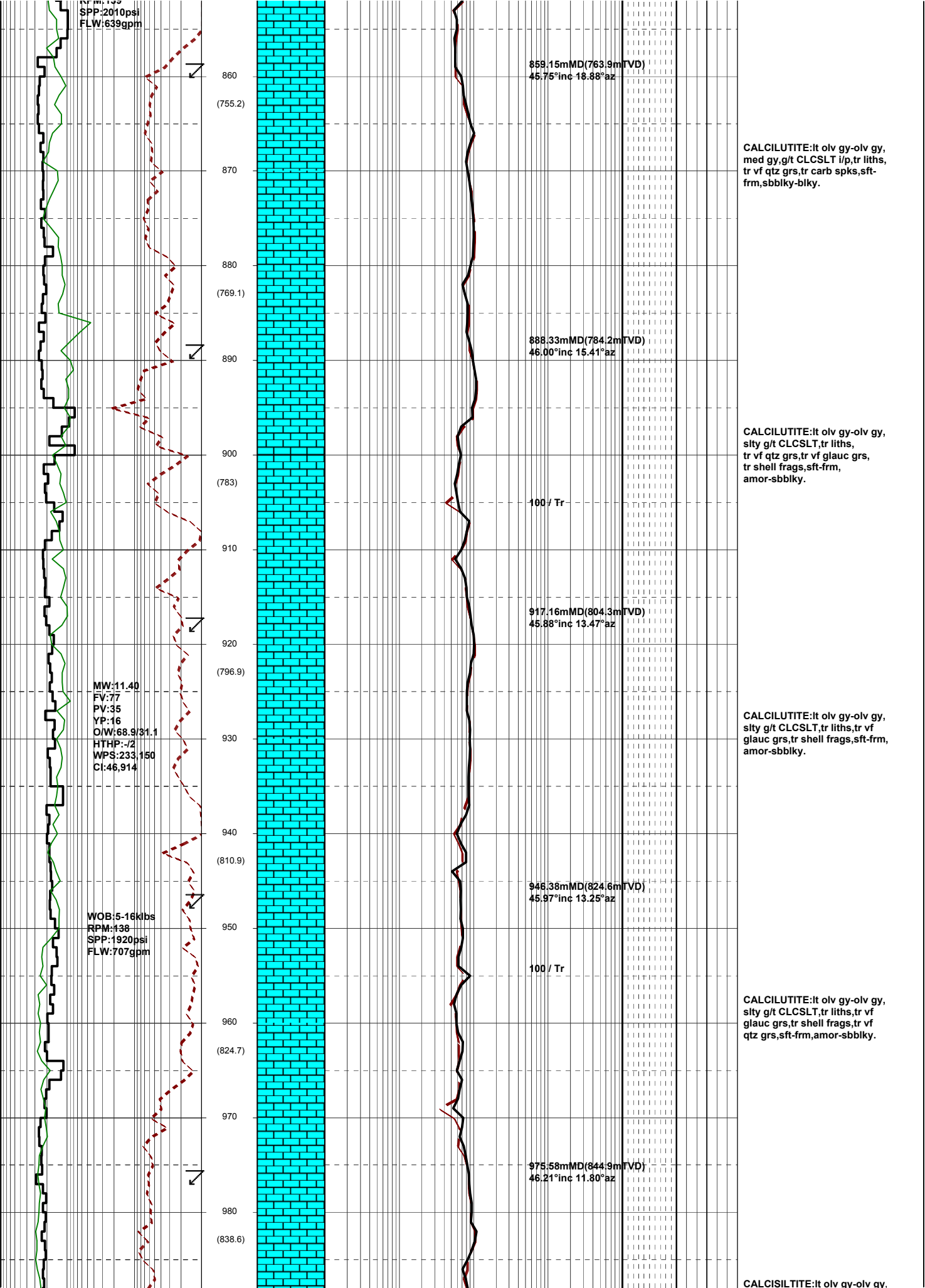
WOB:5-22kibs
 RPM:120

720
(656.3)
730
740
(670.7)
750
760
(684.9)
770
780
(699)
790
800
(713.1)
810
820
(727.2)
830
840
(741.2)
850

100 / Tr
742.74mMD(672.6mTVD)
44.87°inc 32.27°az
100 / Tr
771.50mMD(693.0mTVD)
45.01°inc 29.38°az
100 / Tr
800.64mMD(722.9mTVD)
45.21°inc 25.67°az
100 / Tr
829.77mMD(743.3mTVD)
45.44°inc 22.49°az
100 / Tr

olv gy.trnsi,vf-f,arg, tr-mnr liths,
 mnr glauc cly,lse-fri aggs.
 CALCILUTITE:(40%)lt olv gy-
 olv gy.lt gy,g/t CLCSLT i/p,mnr-
 com liths,tr glauc grs,sft,amor.
 CALCILUTITE:lt olv gy-olv gy,
 lt gy-med gy,g/t CLCSLT i/p,tr-
 mnr liths,tr glauc grs & cly,
 sft,amor-rr sbbiky.
 CALCILUTITE:lt olv gy-olv gy,
 lt gy-med gy,g/t CLCSLT i/p,
 tr-mnr liths,tr glauc grs,
 sft,amor-rr sbbiky.
 CALCILUTITE:lt olv gy-olv gy,
 med gy,g/t CLCSLT i/p,tr liths,
 tr vf glauc grs,tr vf calc grs,
 tr carb spks,sft-frm,
 amor-sbbiky.
 CALCILUTITE:lt olv gy-olv gy,
 med gy,g/t CLCSLT i/p,tr liths,
 tr vf glauc grs,tr vf qtz grs,
 tr carb spks,sft-frm,
 amor-sbbiky.

500 50 5 5 50 500 5K
 100 1K 10K 100K 1000K



SPP:2010psi
FLW:639gpm

860
(755.2)
870
880
(769.1)
890
900
(783)
910
920
(796.9)
930
940
(810.9)
950
960
(824.7)
970
980
(838.6)

MW:11.40
FV:77
PV:35
YP:16
O/W:68.9/31.1
HTHP:-/2
WPS:233,150
CI:46,914

WOB:5-16kibs
RPM:138
SPP:1920psi
FLW:707gpm

858.15mMD(763.9mTVD)
45.75°inc 18.88°az

888.33mMD(784.2mTVD)
46.00°inc 15.41°az

100 / Tr

917.16mMD(804.3mTVD)
45.88°inc 13.47°az

946.38mMD(824.6mTVD)
45.97°inc 13.25°az

100 / Tr

975.58mMD(844.9mTVD)
46.21°inc 11.80°az

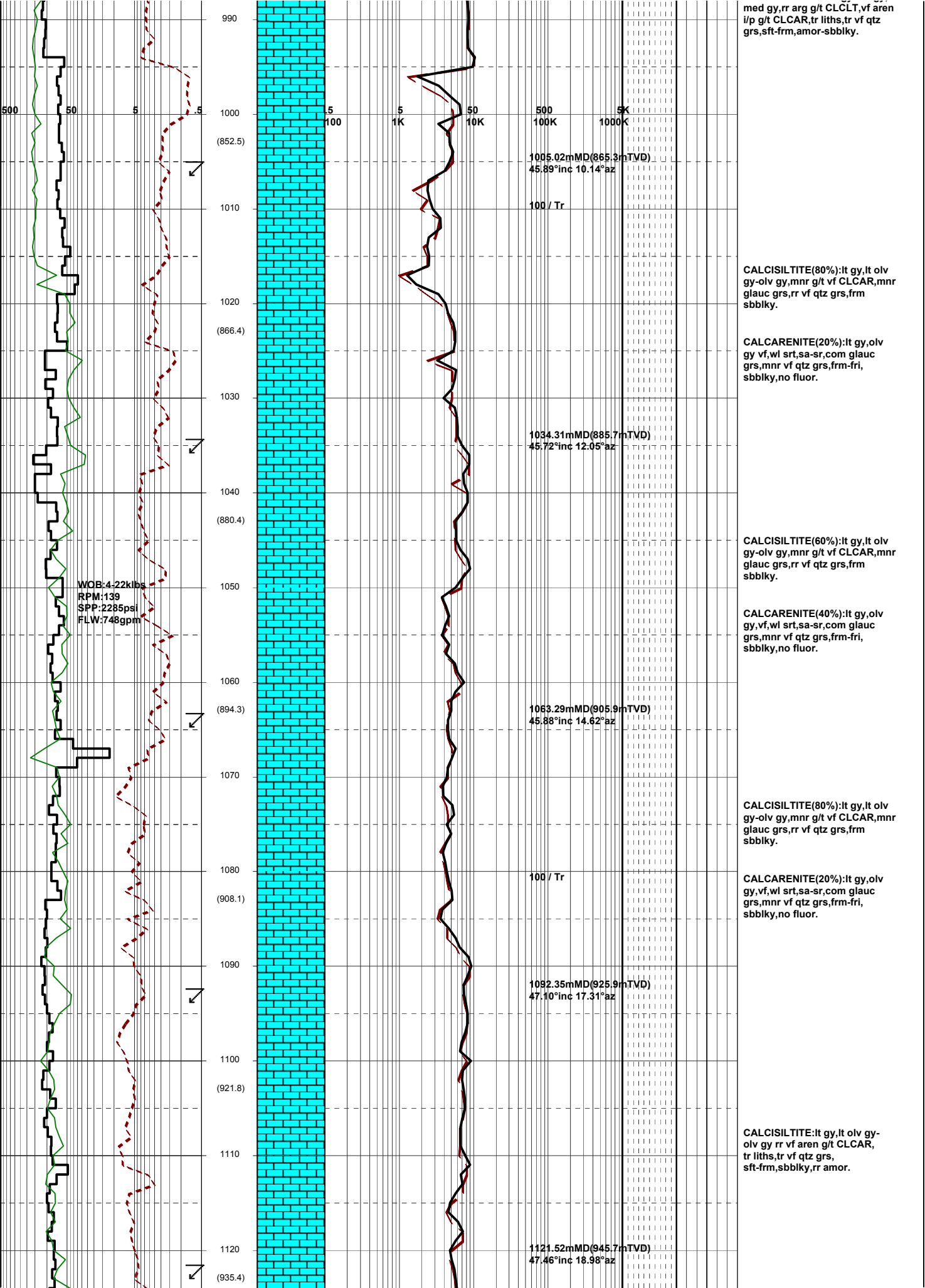
CALCILUTITE:It olv gy-olv gy, med gy,g/t CLCSLT i/p, tr liths, tr vf qtz grs, tr carb spks, sft-frm, sbbiky-blky.

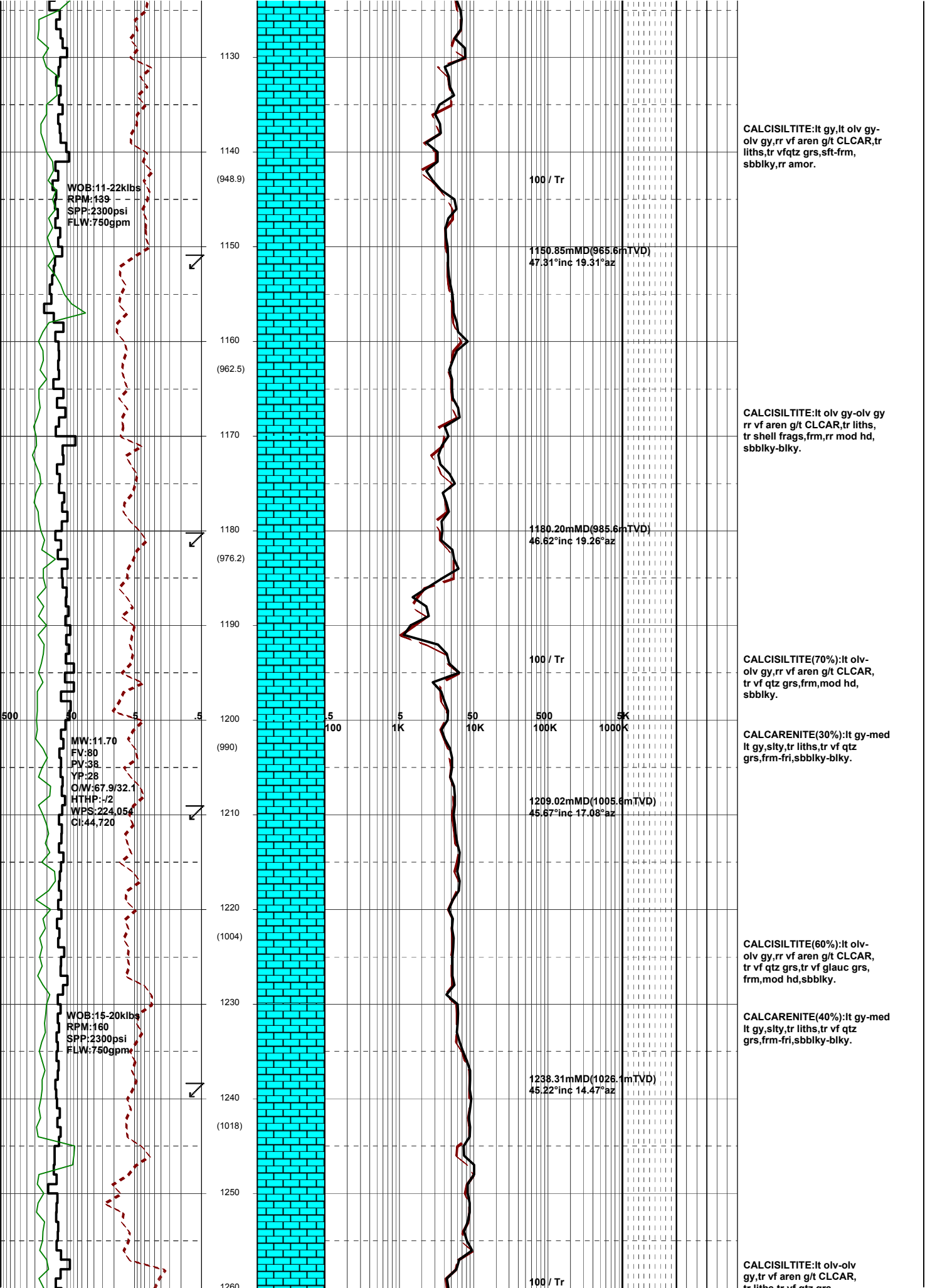
CALCILUTITE:It olv gy-olv gy, sity g/t CLCSLT, tr liths, tr vf qtz grs, tr vf glauc grs, tr shell frags, sft-frm, amor-sbbiky.

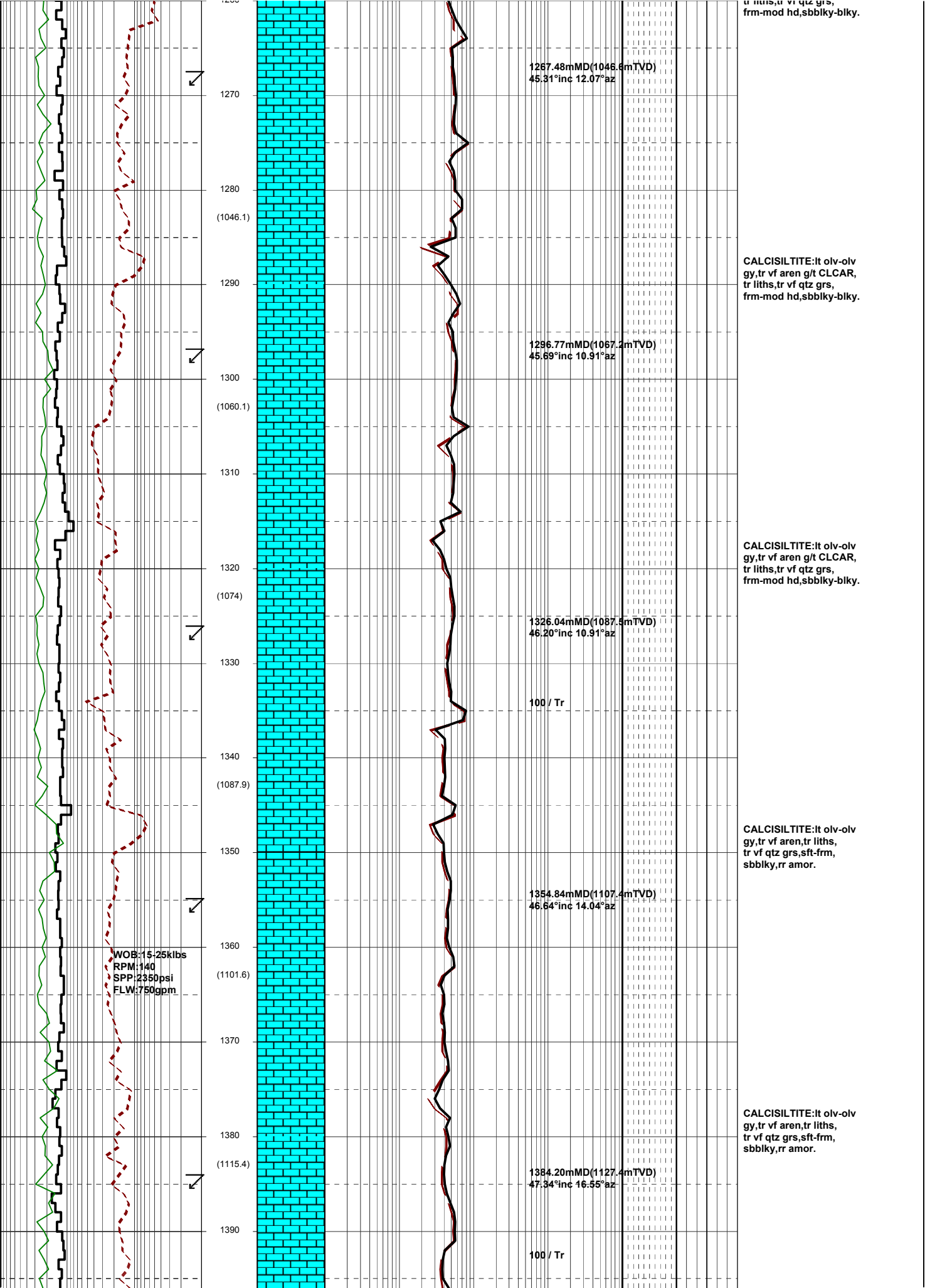
CALCILUTITE:It olv gy-olv gy, sity g/t CLCSLT, tr liths, tr vf glauc grs, tr shell frags, sft-frm, amor-sbbiky.

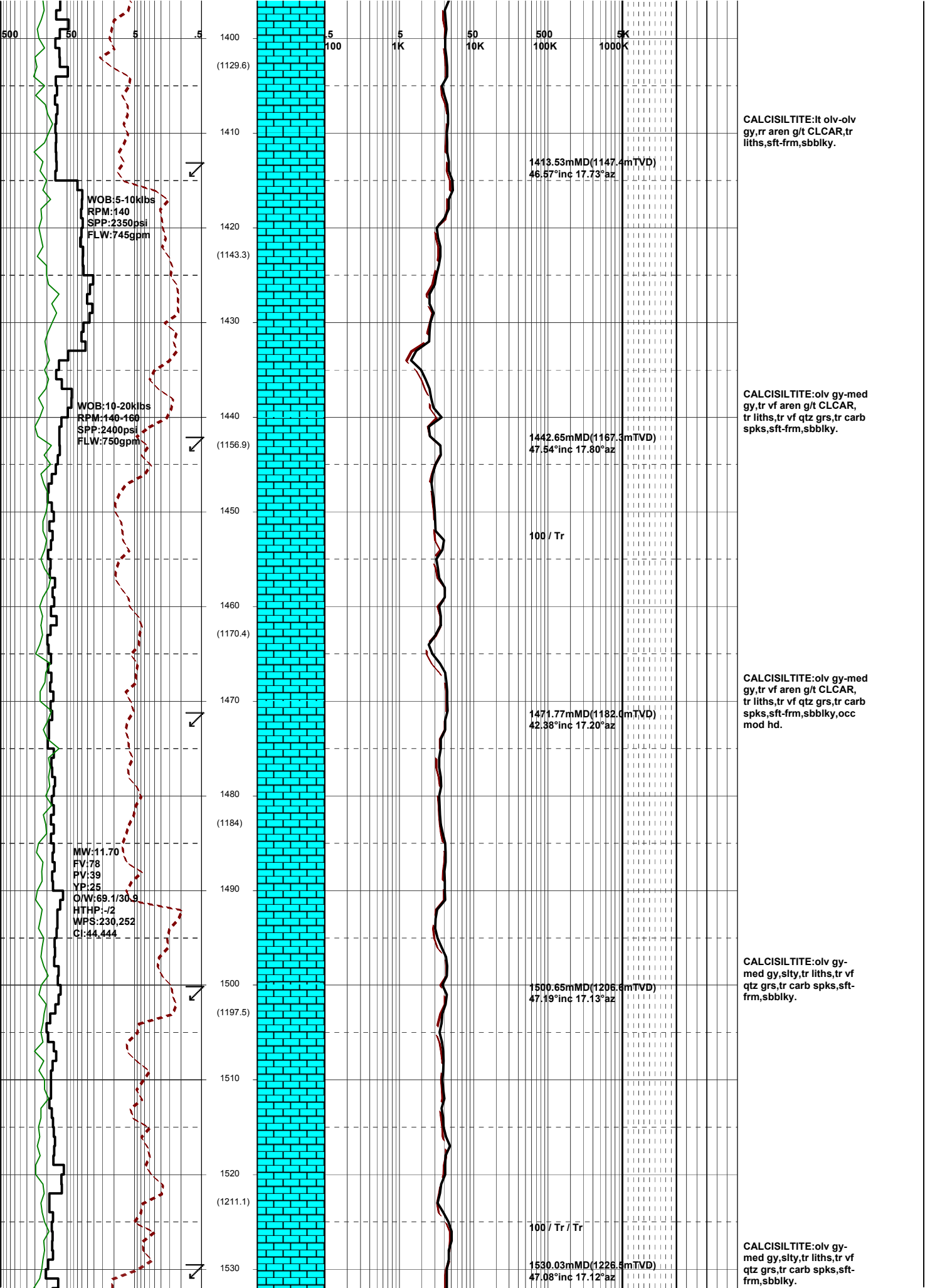
CALCILUTITE:It olv gy-olv gy, sity g/t CLCSLT, tr liths, tr vf glauc grs, tr shell frags, tr vf qtz grs, sft-frm, amor-sbbiky.

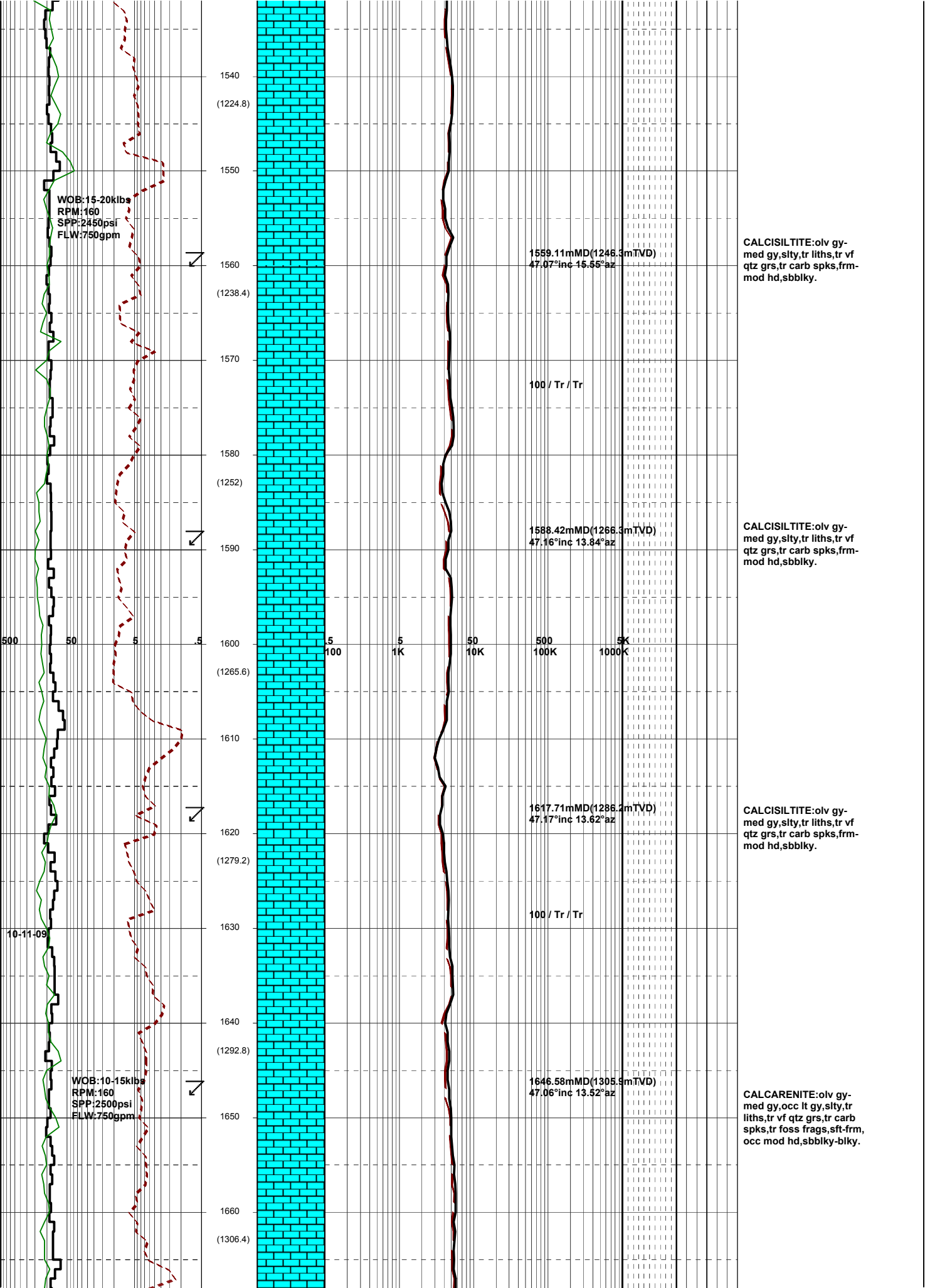
CALCILUTITE:It olv gy-olv gy.

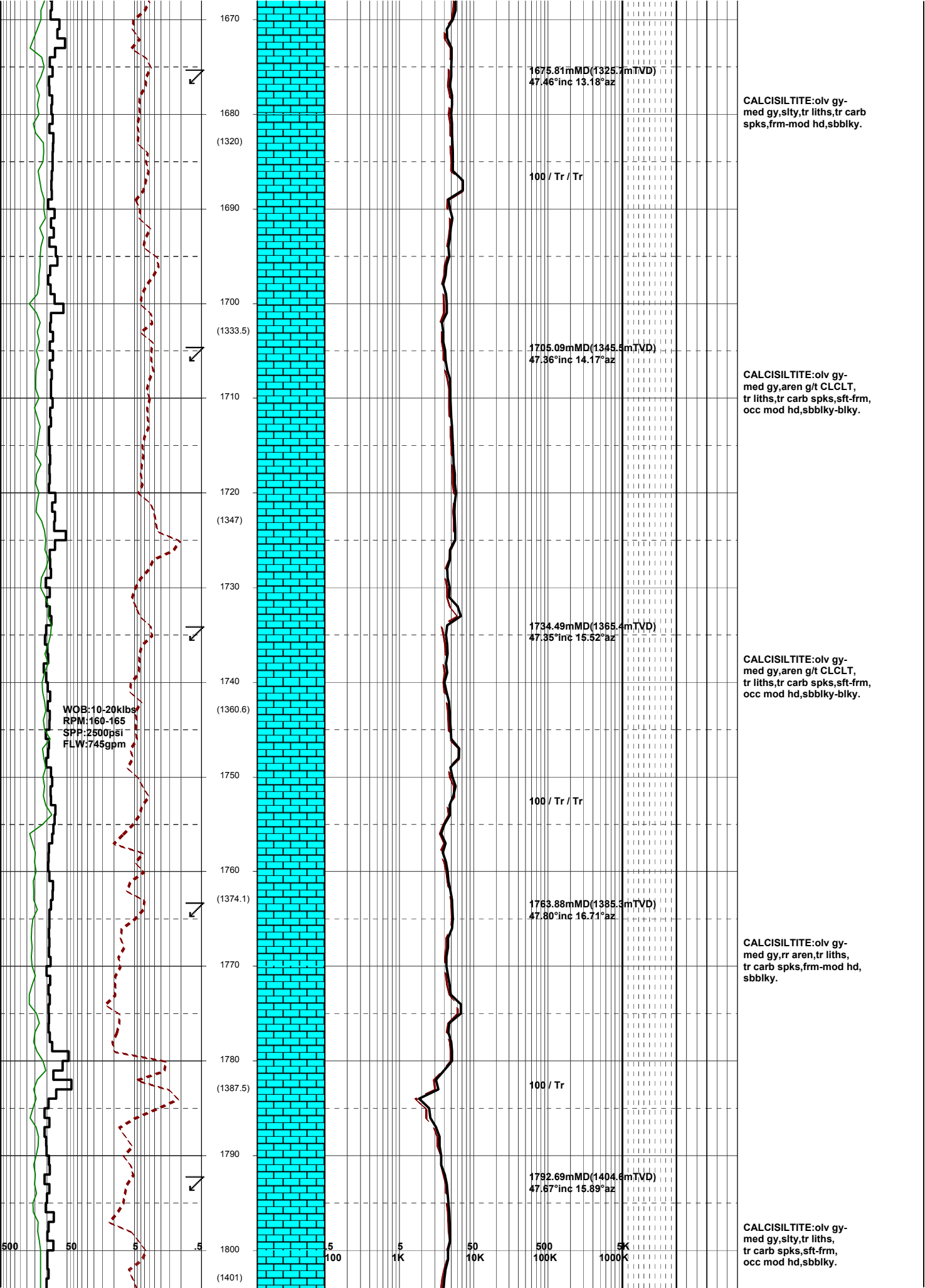


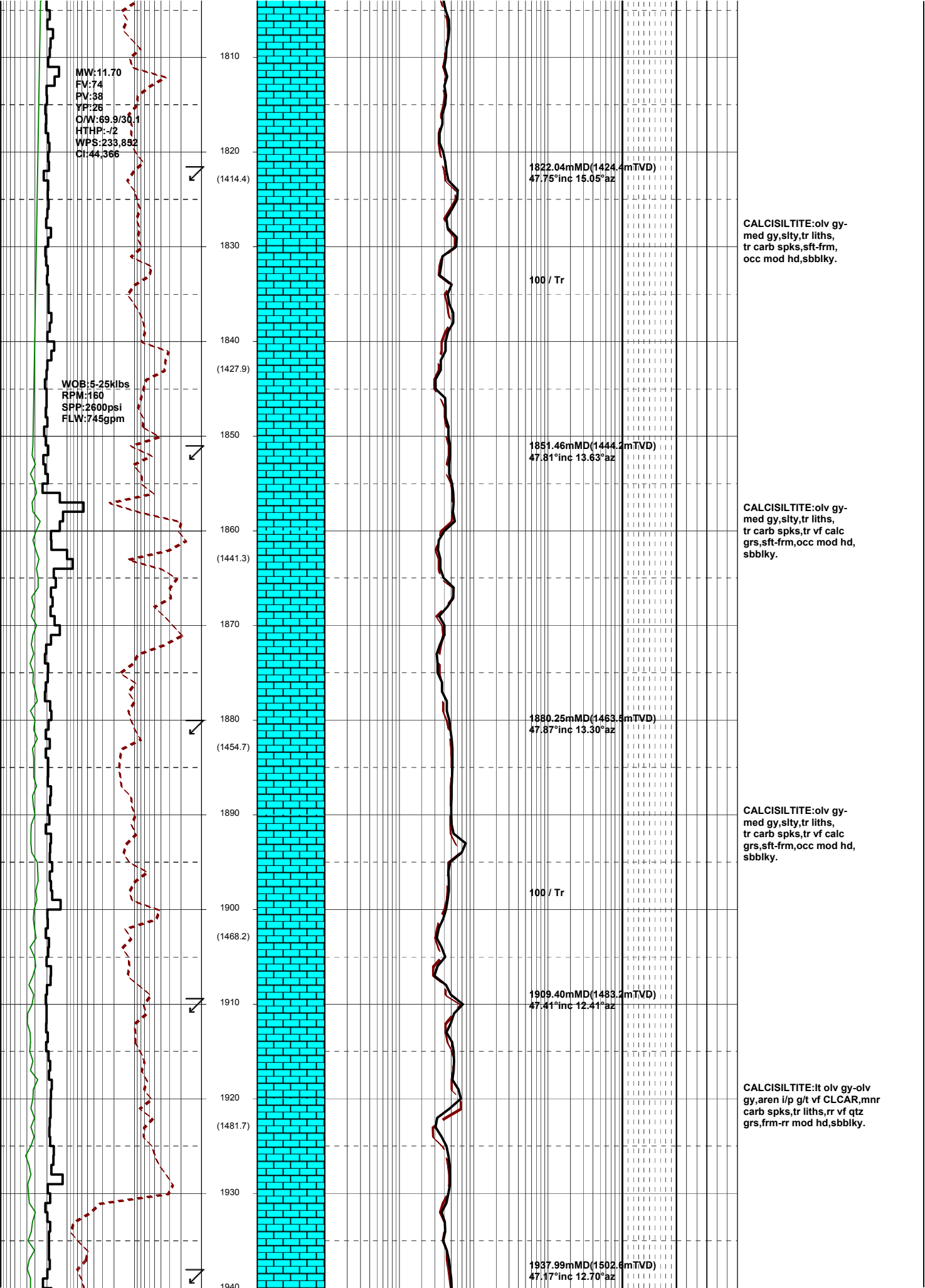












MW:11.70
 FV:74
 PV:38
 YP:26
 O/W:69.9/30.1
 HTHP:-12
 WPS:233,852
 Ct:44,366

WOB:5-25klbs
 RPM:160
 SPP:2600psi
 FLW:745gpm

1810
 (1414.4)
 1820
 1830
 1840
 (1427.9)
 1850
 1860
 (1441.3)
 1870
 1880
 (1454.7)
 1890
 1900
 (1468.2)
 1910
 1920
 (1481.7)
 1930
 1940

1822.04mMD(1424.4mTVD)
 47.75°inc 15.05°az

100 / Tr

1851.46mMD(1444.2mTVD)
 47.81°inc 13.63°az

1880.25mMD(1463.5mTVD)
 47.87°inc 13.30°az

1909.40mMD(1483.2mTVD)
 47.41°inc 12.41°az

100 / Tr

1937.99mMD(1502.6mTVD)
 47.17°inc 12.70°az

CALCISILTITE:olv gy-med gy,slty,tr liths, tr carb spks,sft frm, occ mod hd,sbbiky.

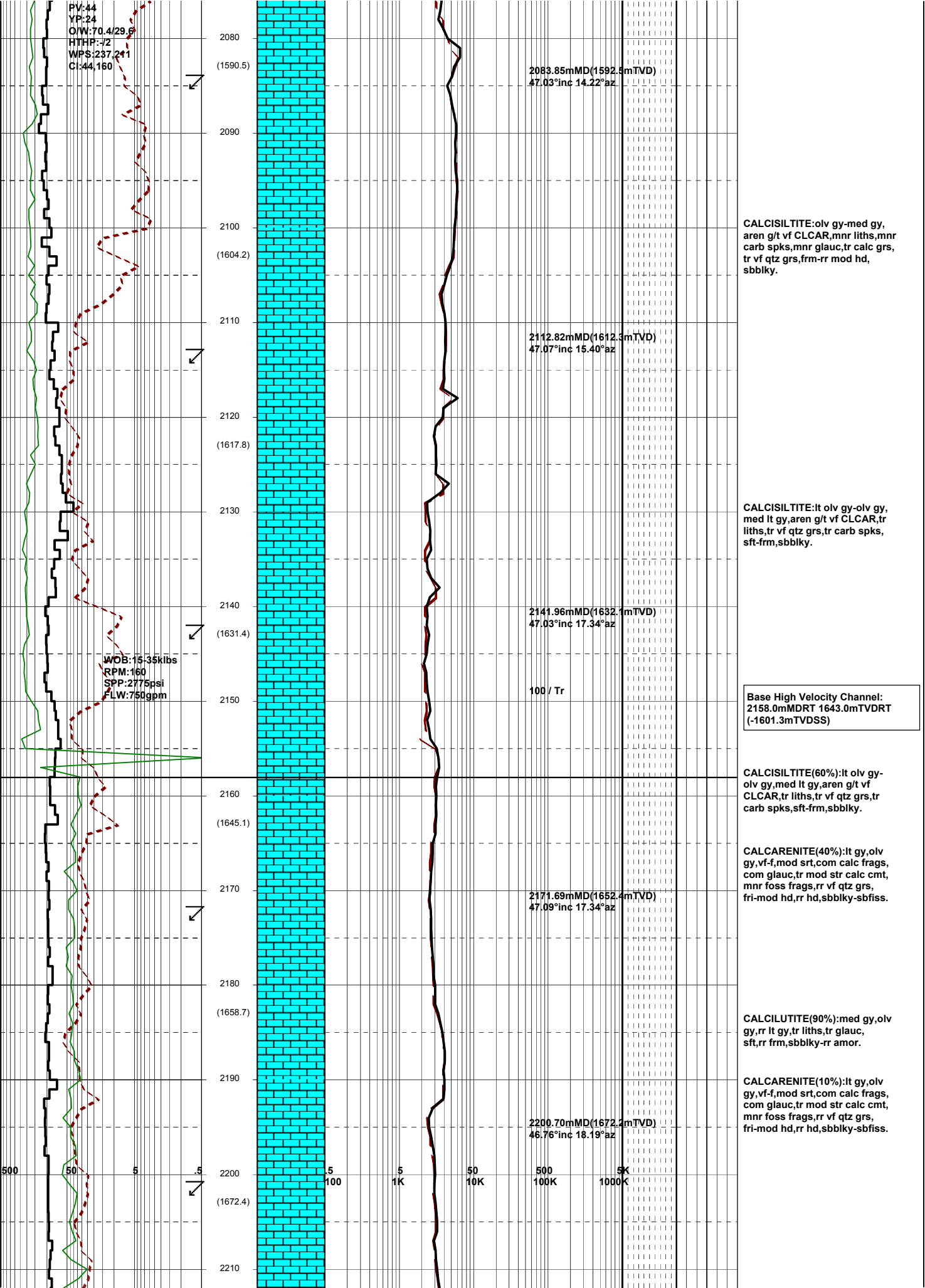
CALCISILTITE:olv gy-med gy,slty,tr liths, tr carb spks,tr vf calc grs,sft frm,occ mod hd, sbbiky.

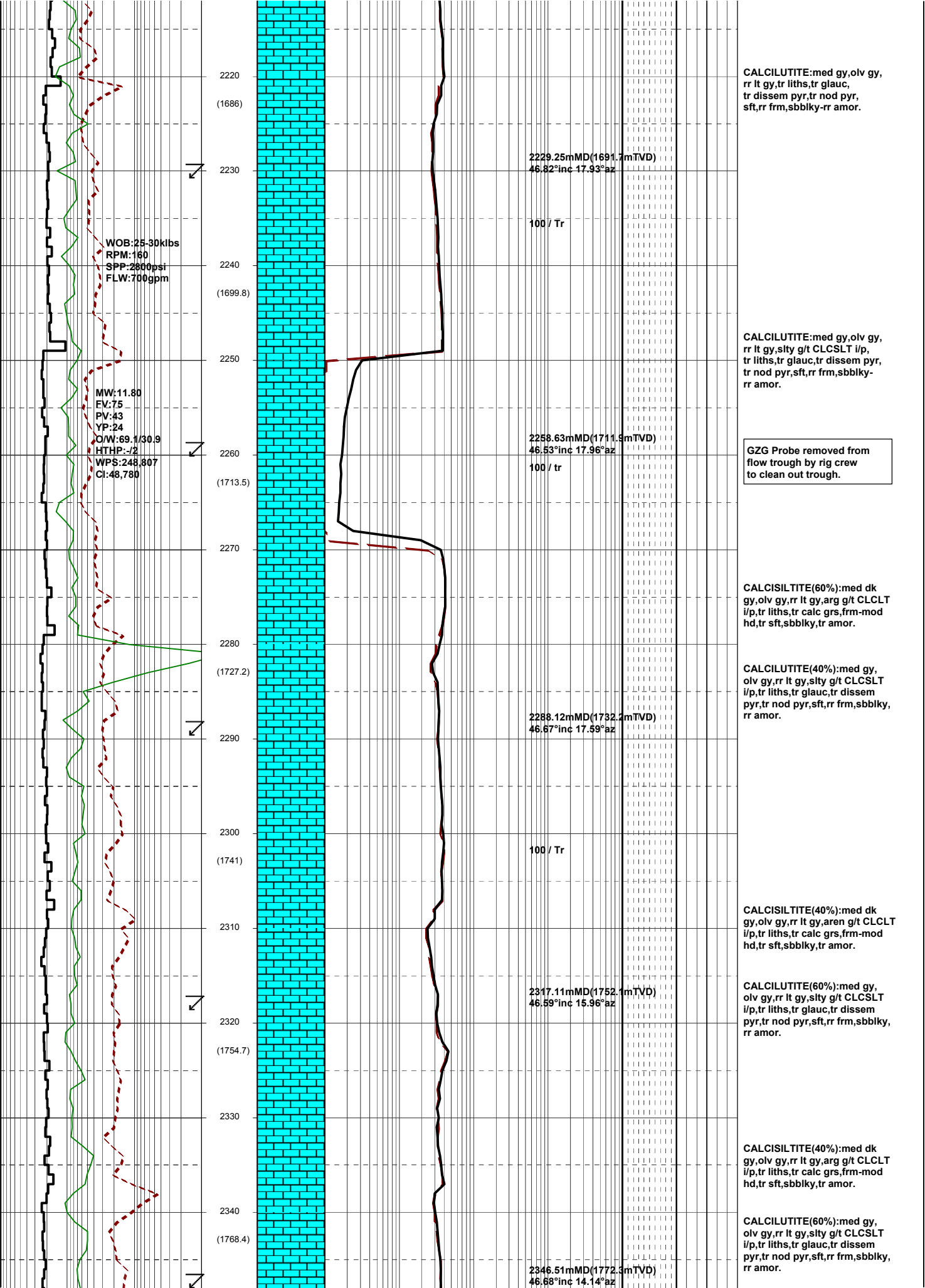
CALCISILTITE:olv gy-med gy,slty,tr liths, tr carb spks,tr vf calc grs,sft frm,occ mod hd, sbbiky.

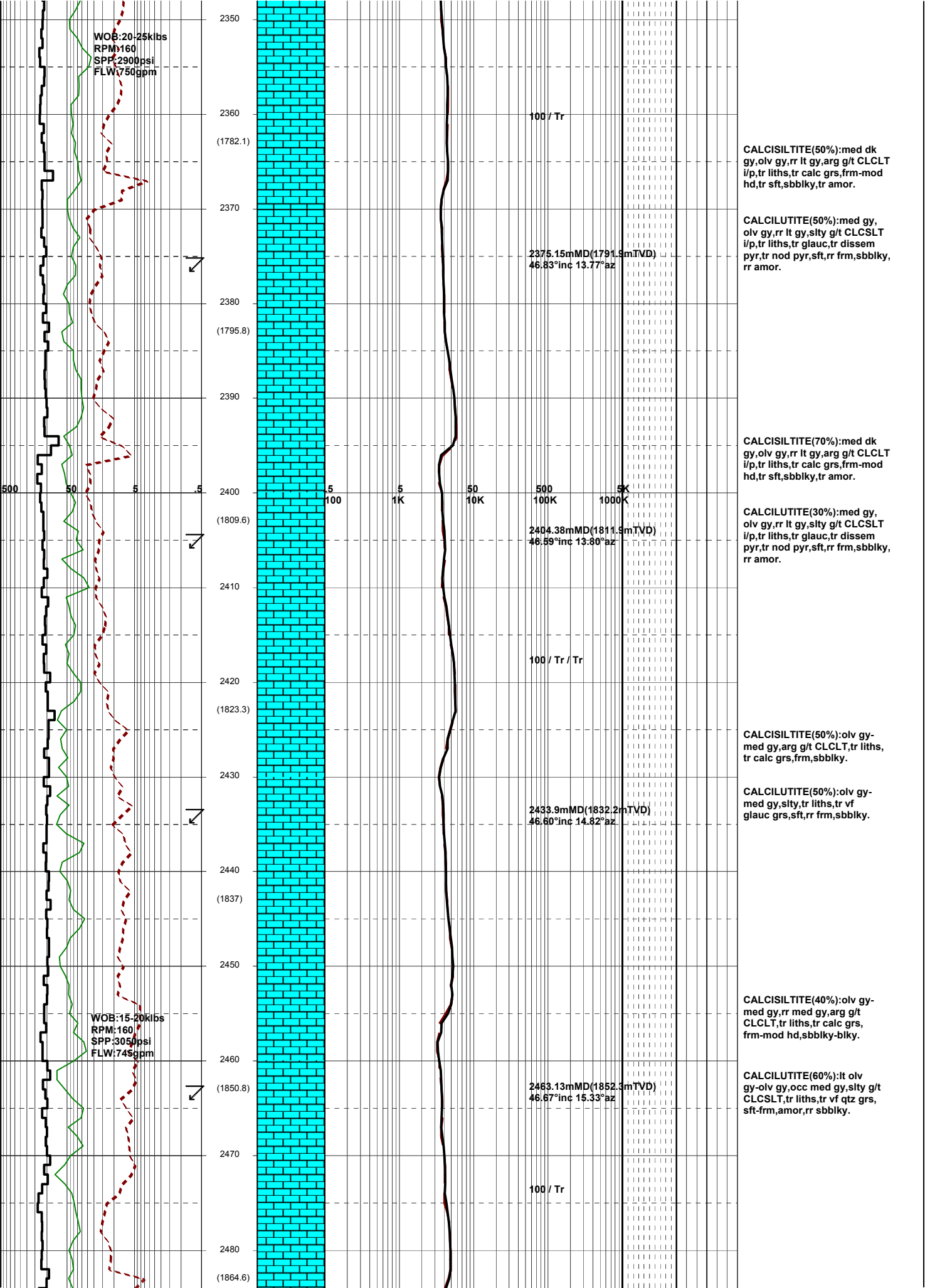
CALCISILTITE:lt olv gy-olv gy,aren i/p g/t vf CLCAR,mnr carb spks,tr liths,rr vf qtz grs,frm-rr mod hd,sbbiky.

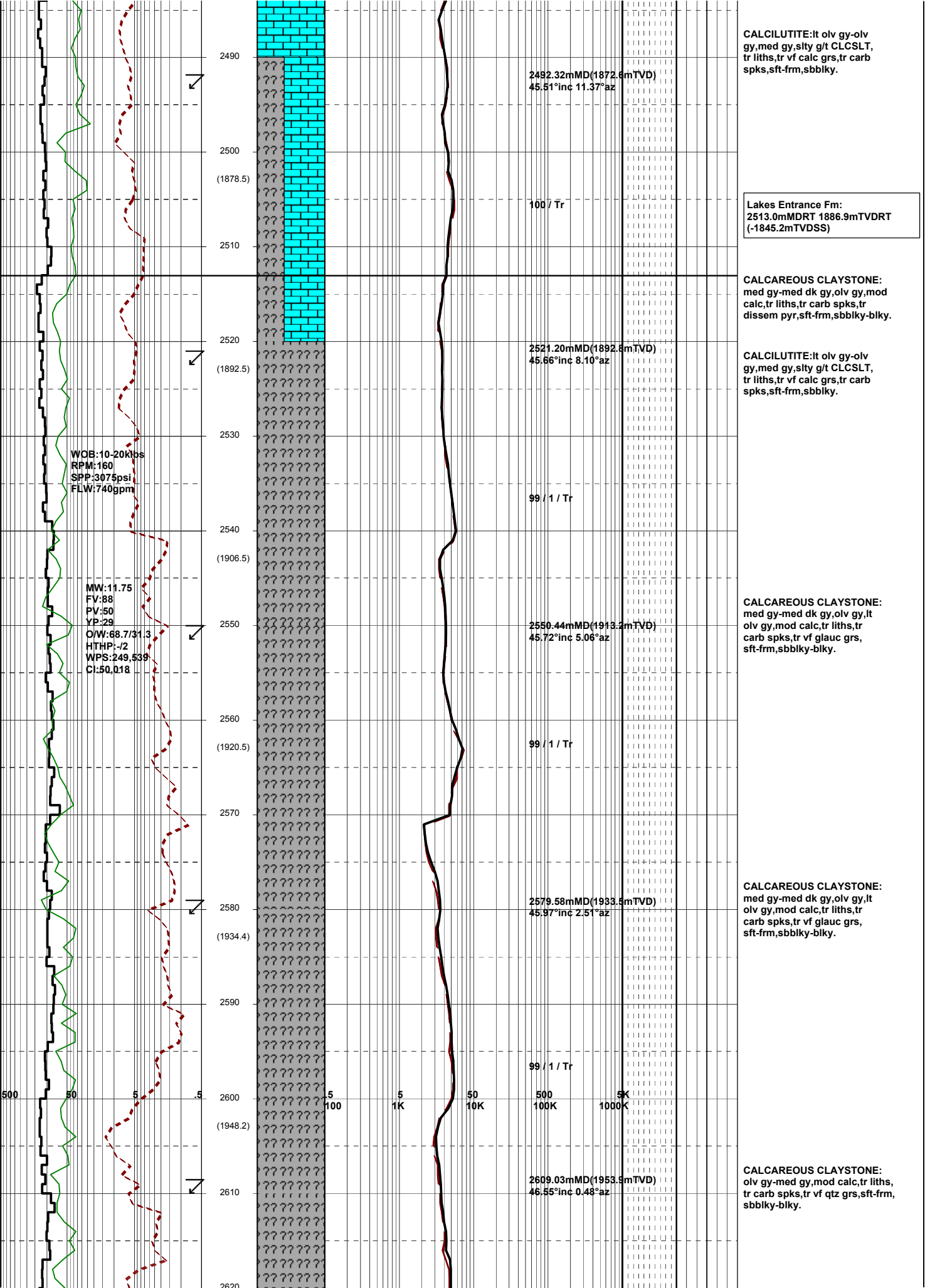
PV:44
YP:24
O/W:70.4/29.6
HTHP:-72
WPS:237.211
CI:44,160

WOB:15-35kilbs
RPM:160
SPP:2775psi
FLW:750gpm









CALCILUTITE:lt olv gy-olv gy,med gy,silty g/t CLCSLT, tr liths,tr vf calc grs,tr carb spks,sft-frm,sbbkly.

Lakes Entrance Fm:
2513.0mMDRT 1886.9mTVDRT (-1845.2mTVDSS)

CALCAREOUS CLAYSTONE: med gy-med dk gy,olv gy,mod calc,tr liths,tr carb spks,tr dissem pyr,sft-frm,sbbkly-blky.

CALCILUTITE:lt olv gy-olv gy,med gy,silty g/t CLCSLT, tr liths,tr vf calc grs,tr carb spks,sft-frm,sbbkly.

CALCAREOUS CLAYSTONE: med gy-med dk gy,olv gy,lt olv gy,mod calc,tr liths,tr carb spks,tr vf glauc grs, sft-frm,sbbkly-blky.

CALCAREOUS CLAYSTONE: med gy-med dk gy,olv gy,lt olv gy,mod calc,tr liths,tr carb spks,tr vf glauc grs, sft-frm,sbbkly-blky.

CALCAREOUS CLAYSTONE: olv gy-med gy,mod calc,tr liths, tr carb spks,tr vf qtz grs,sft-frm, sbbkly-blky.

WOB:10-20Klbs
RPM:160
SPP:3075psi
FLW:740gpm

MW:11.75
FV:88
PV:50
YP:29

O/W:68.7/31.3
HTHP:-J2
WPS:249,539
CI:50,018

2492.32mMD(1872.6mTVD)
45.51°inc 11.37°az

100 / Tr

2521.20mMD(1892.8mTVD)
45.66°inc 8.10°az

99 / 1 / Tr

2550.44mMD(1913.2mTVD)
45.72°inc 5.06°az

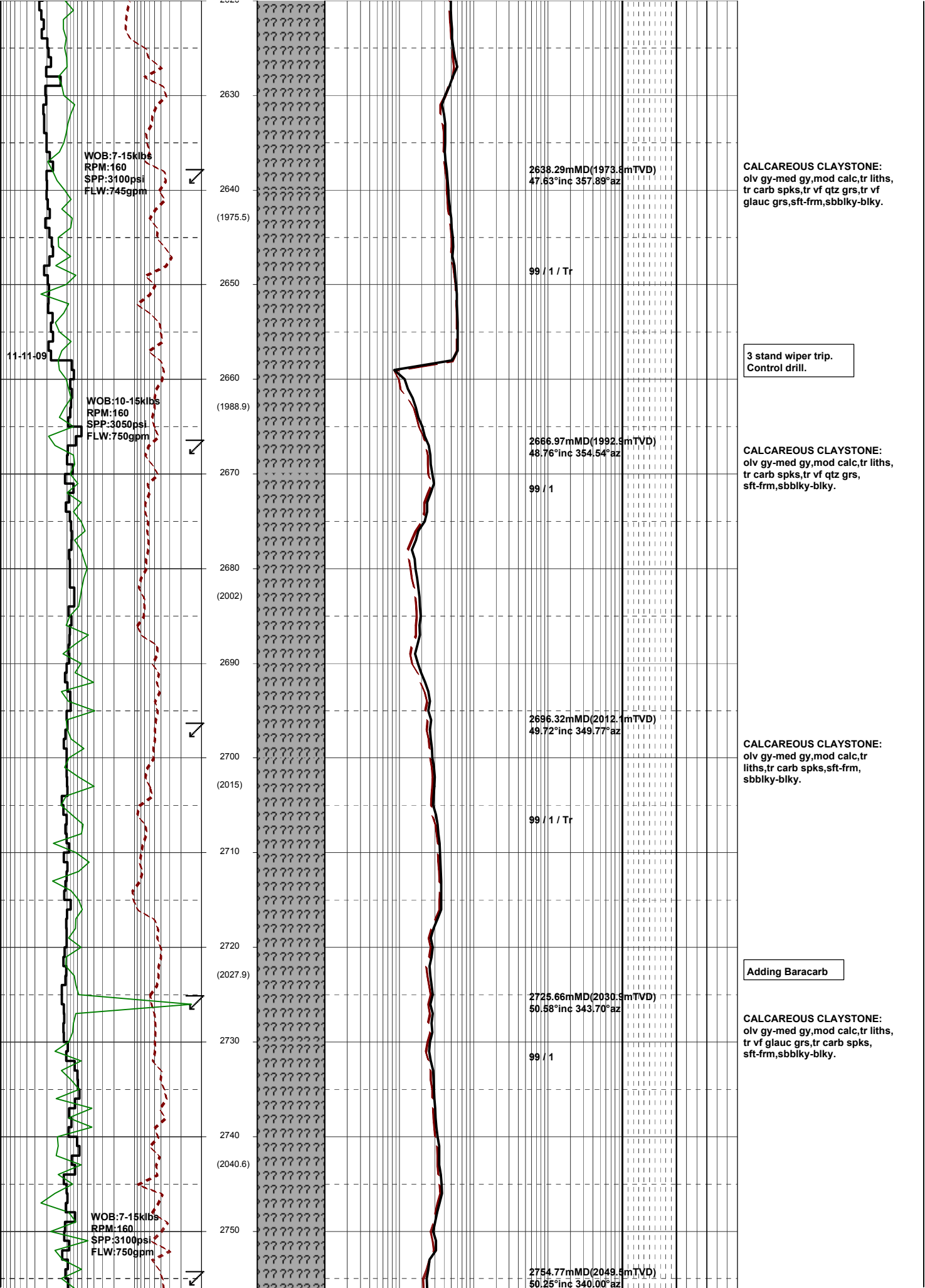
99 / 1 / Tr

2579.58mMD(1933.5mTVD)
45.97°inc 2.51°az

99 / 1 / Tr

2609.03mMD(1953.9mTVD)
46.55°inc 0.48°az

500 50 5 .5 5 100 5 1K 50 10K 500 100K 5K 1000K



CALCAREOUS CLAYSTONE:
 olv gy-med gy,mod calc,tr liths,
 tr carb spks,tr vf qtz grs,tr vf
 glauc grs,sft frm,sbbiky-blky.

3 stand wiper trip.
 Control drill.

CALCAREOUS CLAYSTONE:
 olv gy-med gy,mod calc,tr liths,
 tr carb spks,tr vf qtz grs,
 sft frm,sbbiky-blky.

CALCAREOUS CLAYSTONE:
 olv gy-med gy,mod calc,tr
 liths,tr carb spks,sft frm,
 sbbiky-blky.

Adding Barcarb

CALCAREOUS CLAYSTONE:
 olv gy-med gy,mod calc,tr liths,
 tr vf glauc grs,tr carb spks,
 sft frm,sbbiky-blky.

WOB:7-15klbs
 RPM:160
 SPP:3100psi
 FLW:745gpm

WOB:10-15klbs
 RPM:160
 SPP:3050psi
 FLW:750gpm

WOB:7-15klbs
 RPM:160
 SPP:3100psi
 FLW:750gpm

2638.29mMD(1973.8mTVD)
 47.63°inc 357.89°az

99 / 1 / Tr

2666.97mMD(1992.5mTVD)
 48.76°inc 354.54°az

99 / 1

2696.32mMD(2012.1mTVD)
 49.72°inc 349.77°az

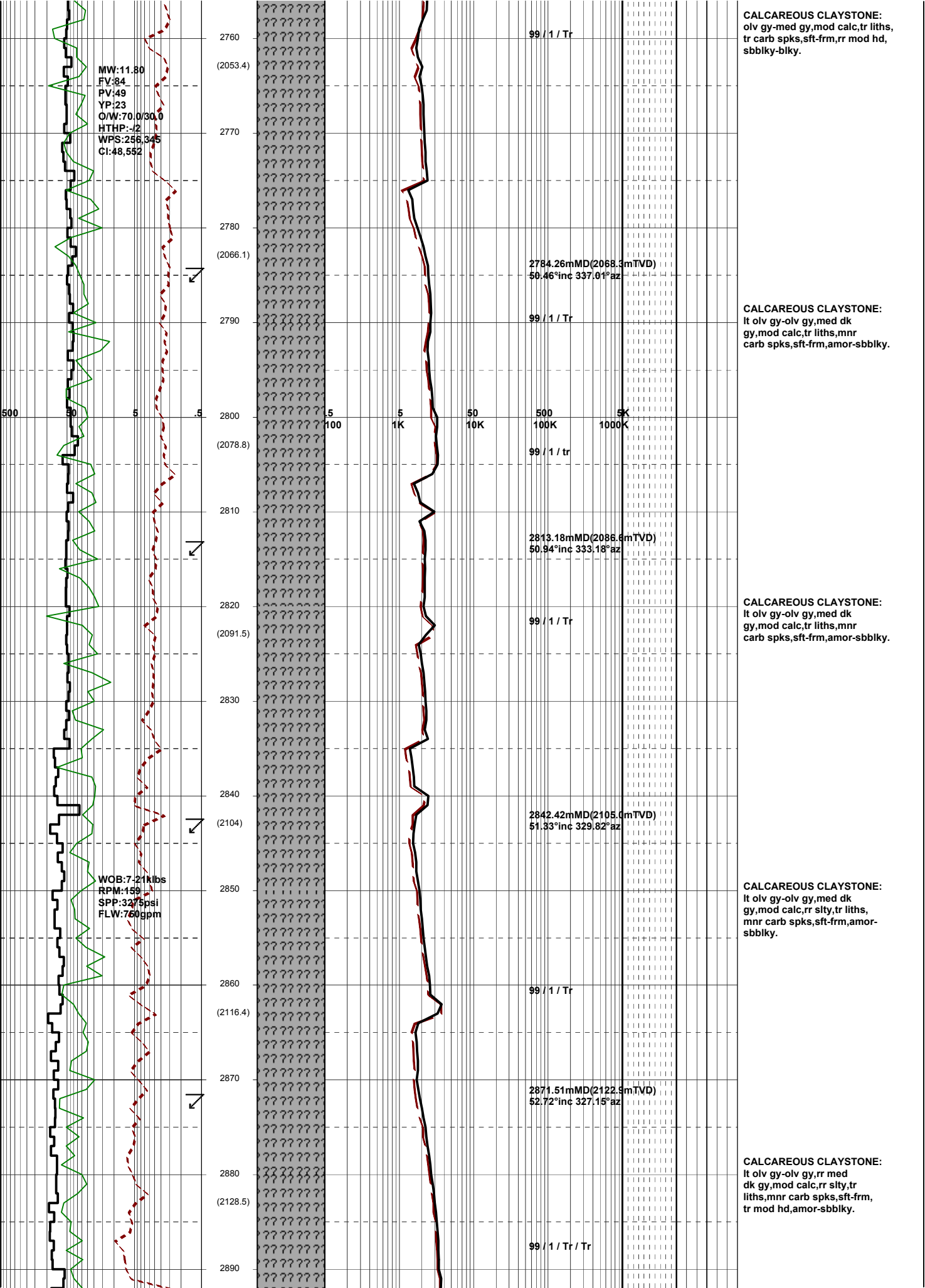
99 / 1 / Tr

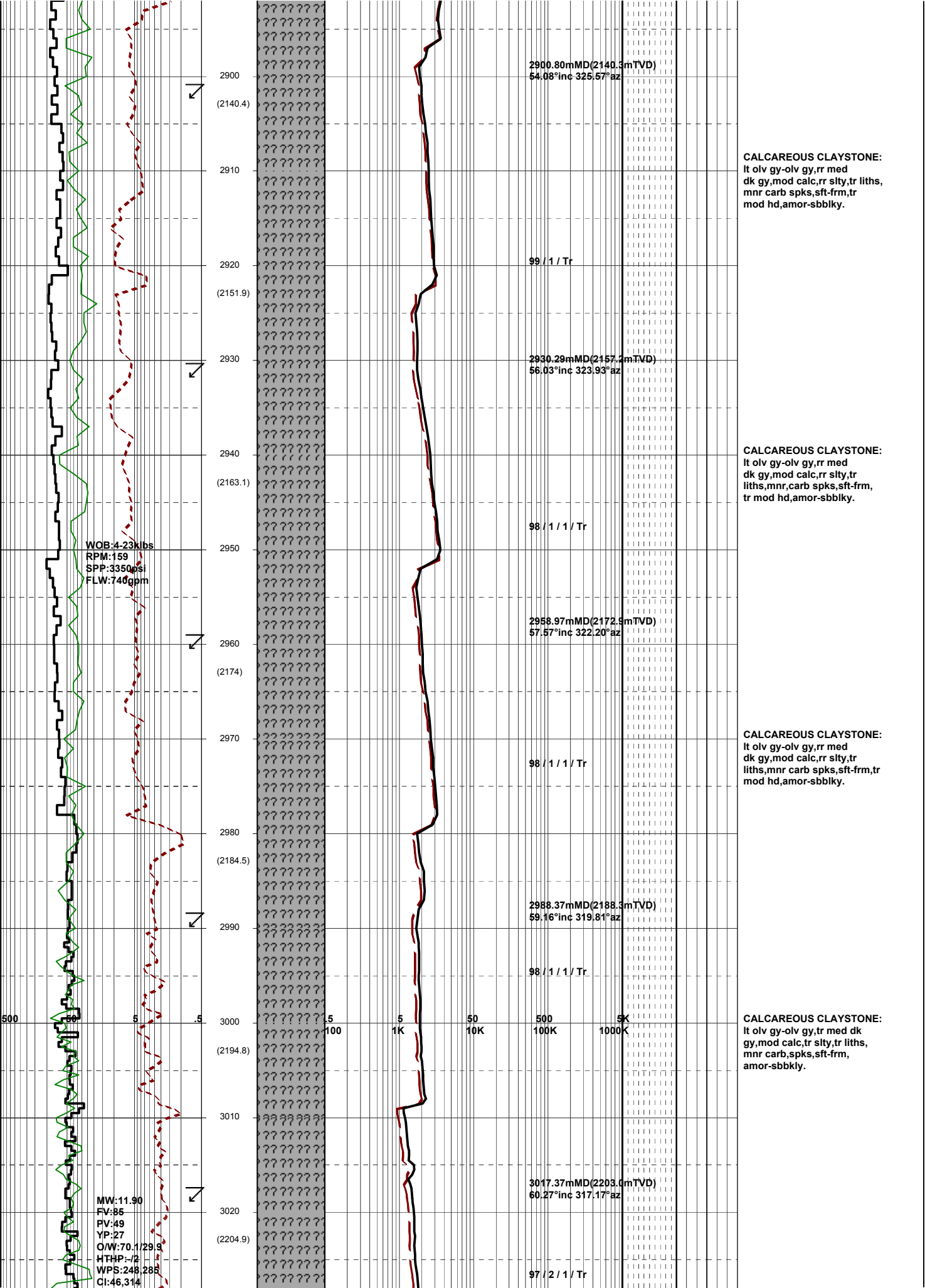
2725.66mMD(2030.5mTVD)
 50.58°inc 343.70°az

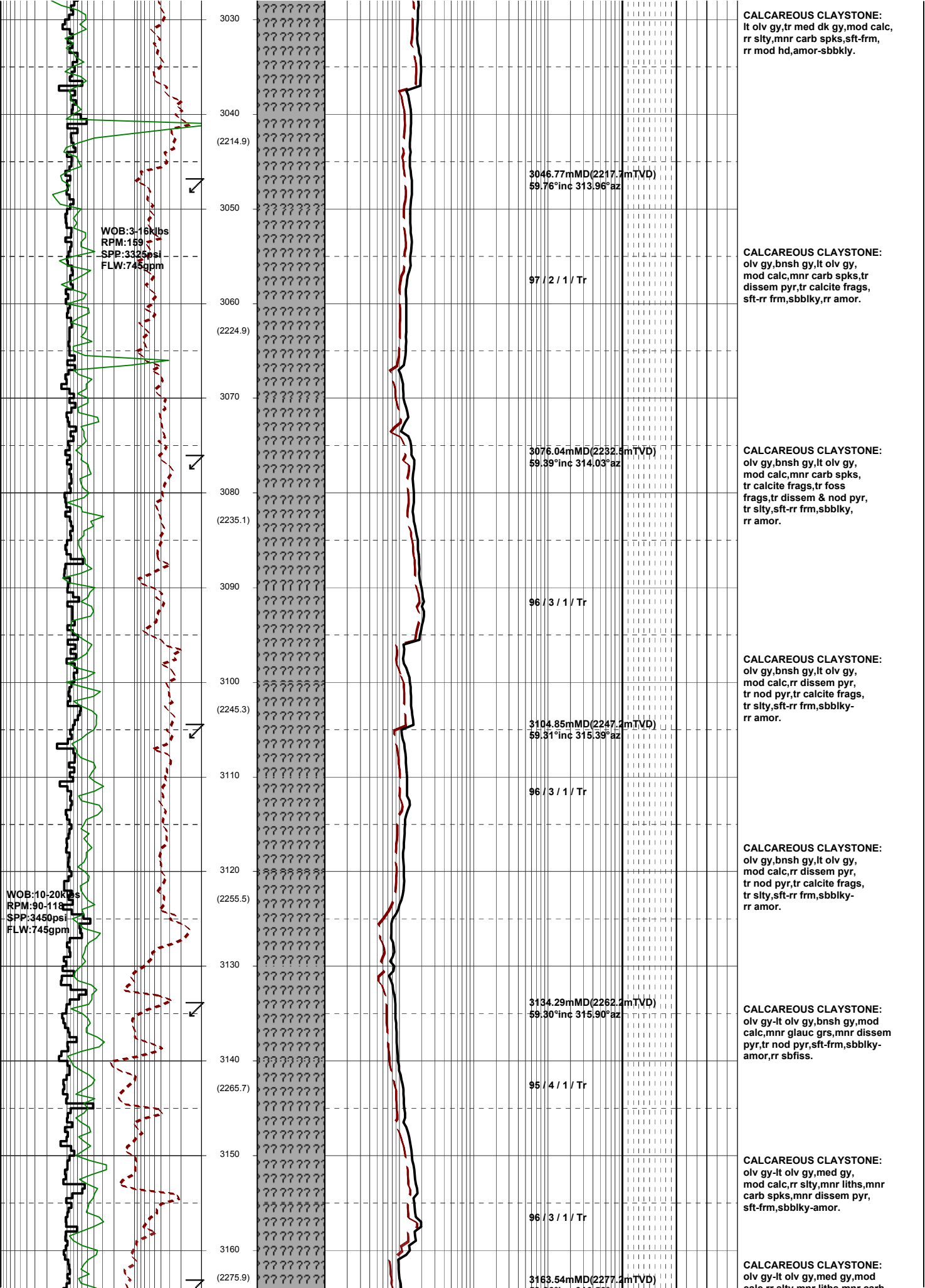
99 / 1

2754.77mMD(2049.5mTVD)
 50.25°inc 340.00°az

11-11-09







WOB: 3.16k lbs
 RPM: 159
 SPP: 3325psi
 FLW: 745gpm

WOB: 10-20k lbs
 RPM: 90-110
 SPP: 3450psi
 FLW: 745gpm

3030
 (2214.9)
 3050
 (2224.9)
 3070
 (2235.1)
 3090
 (2245.3)
 3110
 (2255.5)
 3130
 (2265.7)
 3150
 (2275.9)

3046.77mMD(2217.7mTVD)
 59.76°inc 313.96°az

97 / 2 / 1 / Tr

3076.04mMD(2232.5mTVD)
 59.39°inc 314.03°az

96 / 3 / 1 / Tr

3104.85mMD(2247.2mTVD)
 59.31°inc 315.39°az

96 / 3 / 1 / Tr

3134.29mMD(2262.2mTVD)
 59.30°inc 315.90°az

95 / 4 / 1 / Tr

96 / 3 / 1 / Tr

3163.54mMD(2277.2mTVD)

CALCAREOUS CLAYSTONE:
 lt olv gy, tr med dk gy, mod calc,
 rr slty, mnr carb spks, sft-frm,
 rr mod hd, amor-sbbkly.

CALCAREOUS CLAYSTONE:
 olv gy, bnsh gy, lt olv gy,
 mod calc, mnr carb spks, tr
 dissem pyr, tr calcite frags,
 sft-rr frm, sbbkly, rr amor.

CALCAREOUS CLAYSTONE:
 olv gy, bnsh gy, lt olv gy,
 mod calc, mnr carb spks,
 tr calcite frags, tr foss
 frags, tr dissem & nod pyr,
 tr slty, sft-rr frm, sbbkly,
 rr amor.

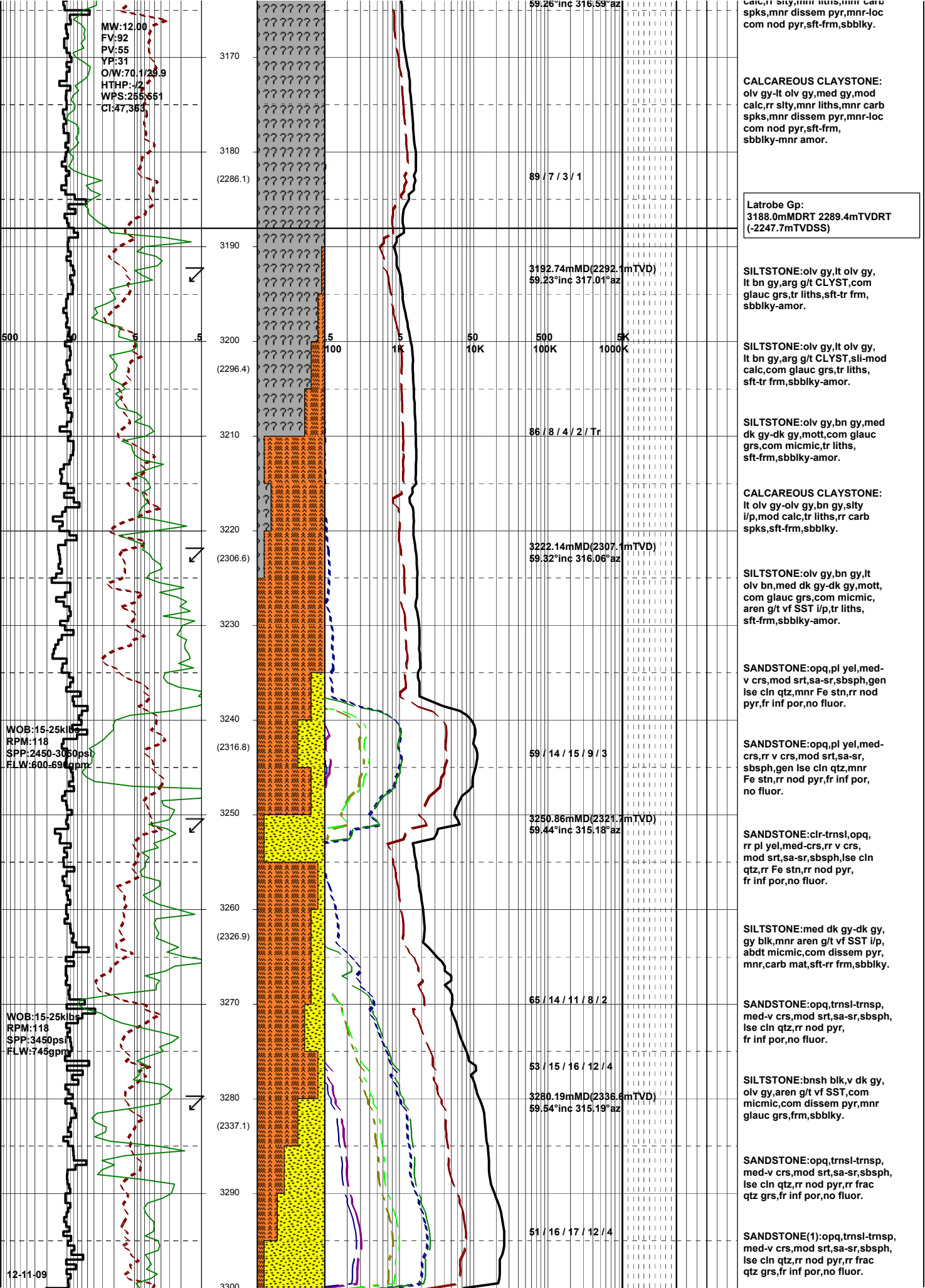
CALCAREOUS CLAYSTONE:
 olv gy, bnsh gy, lt olv gy,
 mod calc, rr dissem pyr,
 tr nod pyr, tr calcite frags,
 tr slty, sft-rr frm, sbbkly-
 rr amor.

CALCAREOUS CLAYSTONE:
 olv gy, bnsh gy, lt olv gy,
 mod calc, rr dissem pyr,
 tr nod pyr, tr calcite frags,
 tr slty, sft-rr frm, sbbkly-
 rr amor.

CALCAREOUS CLAYSTONE:
 olv gy-lt olv gy, bnsh gy, mod
 calc, mnr glauc grs, mnr dissem
 pyr, tr nod pyr, sft-frm, sbbkly-
 amor, rr sbfiss.

CALCAREOUS CLAYSTONE:
 olv gy-lt olv gy, med gy,
 mod calc, rr slty, mnr liths, mnr
 carb spks, mnr dissem pyr,
 sft-frm, sbbkly-amor.

CALCAREOUS CLAYSTONE:
 olv gy-lt olv gy, med gy, mod
 calc, olv mnr liths, mnr carb



MW:12.00
 FV:92
 PV:55
 YP:31
 O/W:70.1/29.9
 HTHP:-12
 WPS:255.651
 CI:47.363

3170
 (2286.1)
 3180
 3190
 3200
 (2296.4)
 3210
 3220
 (2306.6)
 3230
 3240
 (2316.8)
 3250
 3260
 (2326.9)
 3270
 3280
 (2337.1)
 3290
 3300

59.26°Inc 316.59°az
 89 / 7 / 3 / 1
 3192.74mMD(2292.1mTVD)
 59.23°inc 317.01°az
 500 5K
 100 1000K
 86 / 8 / 4 / 2 / Tr
 3222.14mMD(2307.1mTVD)
 59.32°inc 316.06°az
 59 / 14 / 15 / 9 / 3
 3250.86mMD(2321.7mTVD)
 59.44°inc 315.18°az
 65 / 14 / 11 / 8 / 2
 53 / 15 / 16 / 12 / 4
 3280.19mMD(2336.6mTVD)
 59.54°inc 315.19°az
 51 / 16 / 17 / 12 / 4

CALCAREOUS CLAYSTONE:
 olv gy-it olv gy,med gy,mod calc,rr slty,mnr liths,mnr carb spks,mnr disse pyr,mnr-loc com nod pyr,sft-frm,sbbkly.

Latrobe Gp:
 3188.0mMDRT 2289.4mTVDRT (-2247.7mTVDSS)

SILTSTONE:olv gy,it olv gy,lt bn gy,arg g/t CLYST,com glauc grs,tr liths,sft-tr frm,sbbkly-amor.

SILTSTONE:olv gy,it olv gy,lt bn gy,arg g/t CLYST,slimod calc,com glauc grs,tr liths,sft-tr frm,sbbkly-amor.

SILTSTONE:olv gy,bn gy,med dk gy-dk gy,mott,com glauc grs,com micmic,tr liths,sft-frm,sbbkly-amor.

CALCAREOUS CLAYSTONE:
 lt olv gy-olv gy,bn gy,slty i/p,mod calc,tr liths,rr carb spks,sft-frm,sbbkly.

SILTSTONE:olv gy,bn gy,lt olv bn,med dk gy-dk gy,mott,com glauc grs,com micmic,aren g/t vf SST i/p,tr liths,sft-frm,sbbkly-amor.

SANDSTONE:opq,pl yel,med-v crs,mod srt,sa-sr,sbsph,gen lse cln qtz,mnr Fe stn,rr nod pyr,fr inf por,no fluor.

SANDSTONE:opq,pl yel,med-crs,rr v crs,mod srt,sa-sr,sbsph,gen lse cln qtz,mnr Fe stn,rr nod pyr,fr inf por,no fluor.

SANDSTONE:clr-trnsl,opq,rr pl yel,med-crs,rr v crs,mod srt,sa-sr,sbsph,lse cln qtz,rr Fe stn,rr nod pyr,fr inf por,no fluor.

SILTSTONE:med dk gy-dk gy,gy blk,mnr aren g/t vf SST i/p,abdt micmic,com disse pyr,mnr,carb mat,sft-frm,sbbkly.

SANDSTONE:opq,trnsl-trnsp,med-v crs,mod srt,sa-sr,sbsph,lse cln qtz,rr nod pyr,fr inf por,no fluor.

SILTSTONE:bnsh blk,v dk gy,olv gy,aren g/t vf SST,com micmic,com disse pyr,mnr glauc grs,frm,sbbkly.

SANDSTONE:opq,trnsl-trnsp,med-v crs,mod srt,sa-sr,sbsph,lse cln qtz,rr nod pyr,rr frac qtz grs,fr inf por,no fluor.

SANDSTONE(1):opq,trnsl-trnsp,med-v crs,mod srt,sa-sr,sbsph,lse cln qtz,rr nod pyr,rr frac qtz grs,fr inf por,no fluor.

